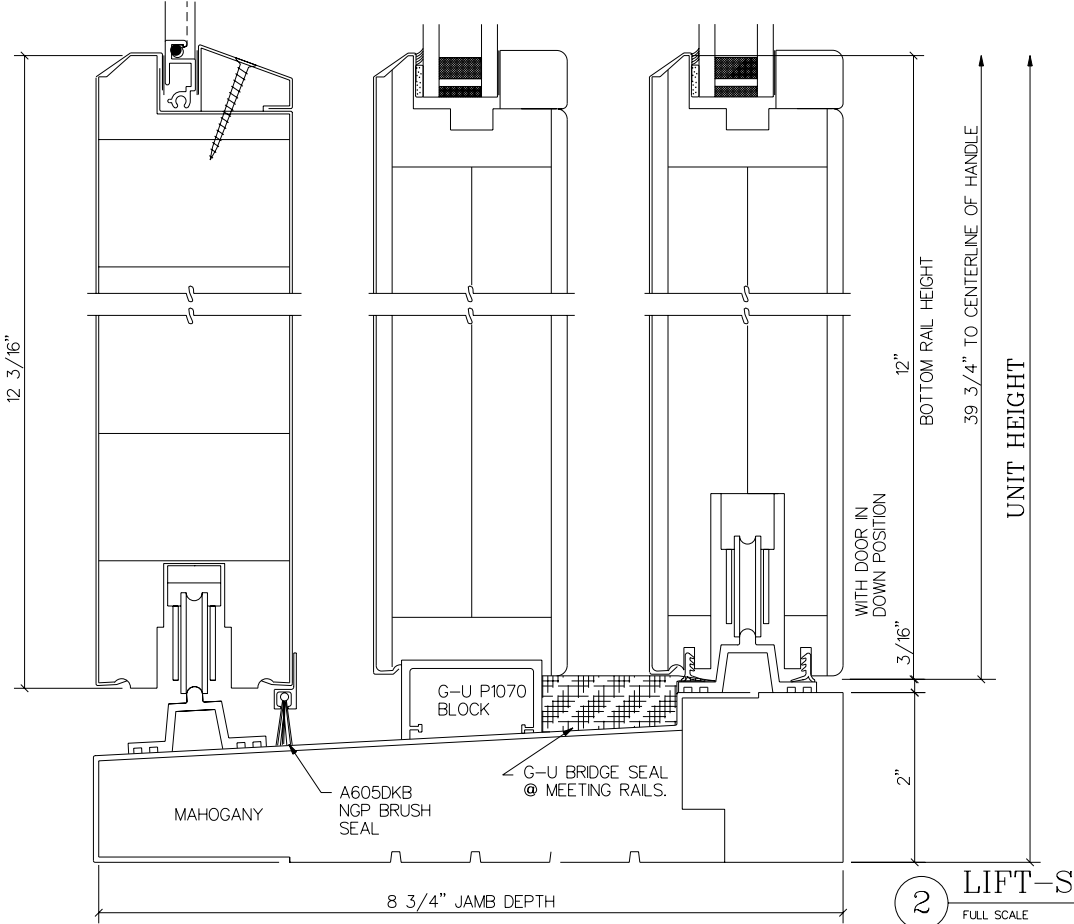
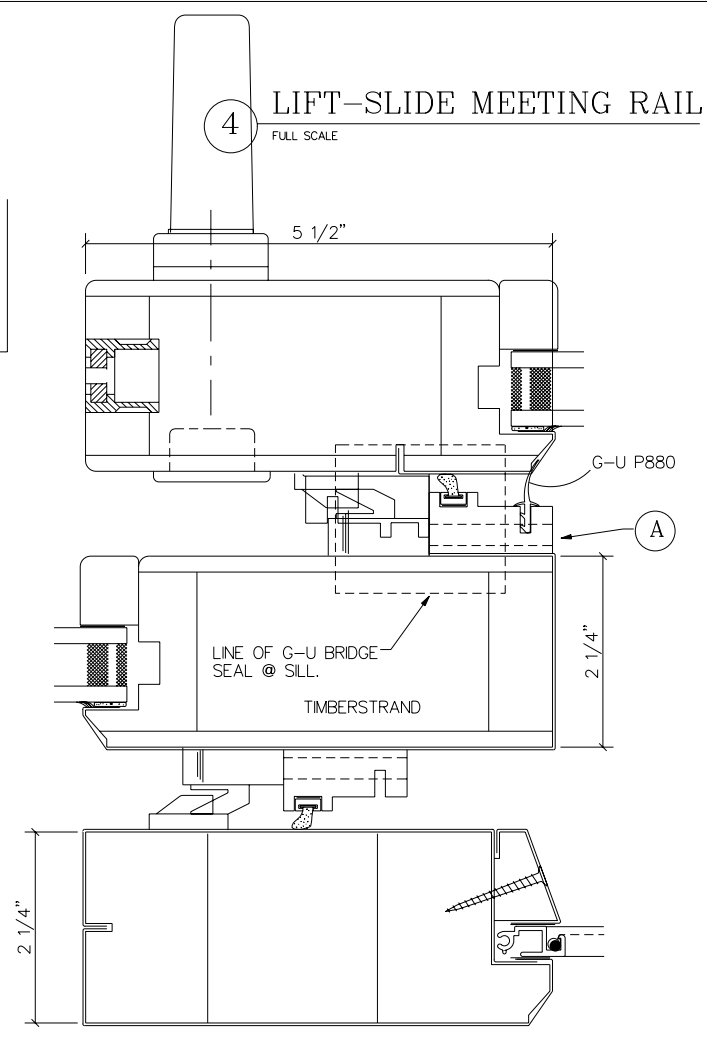
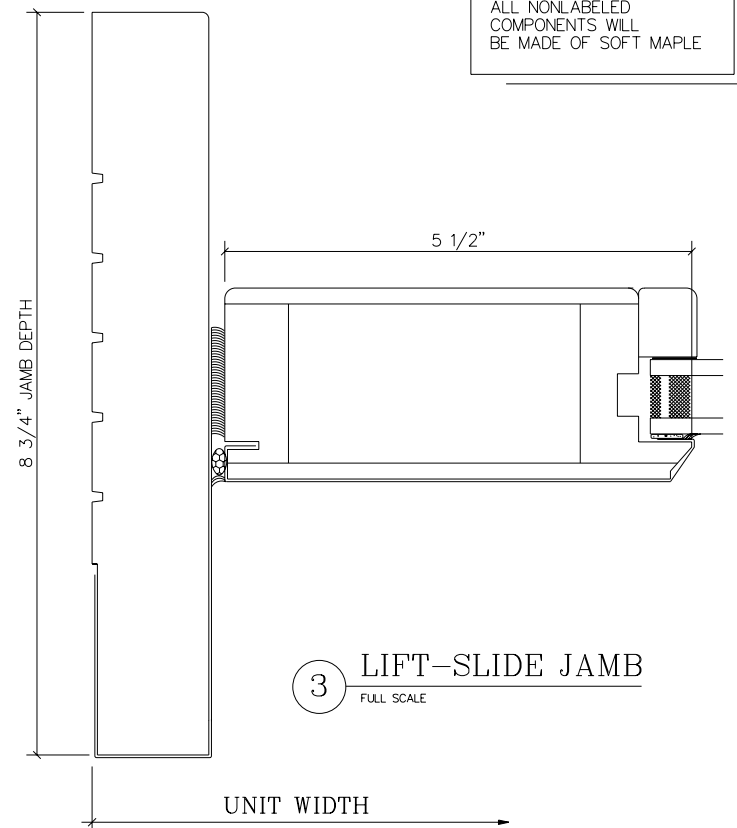
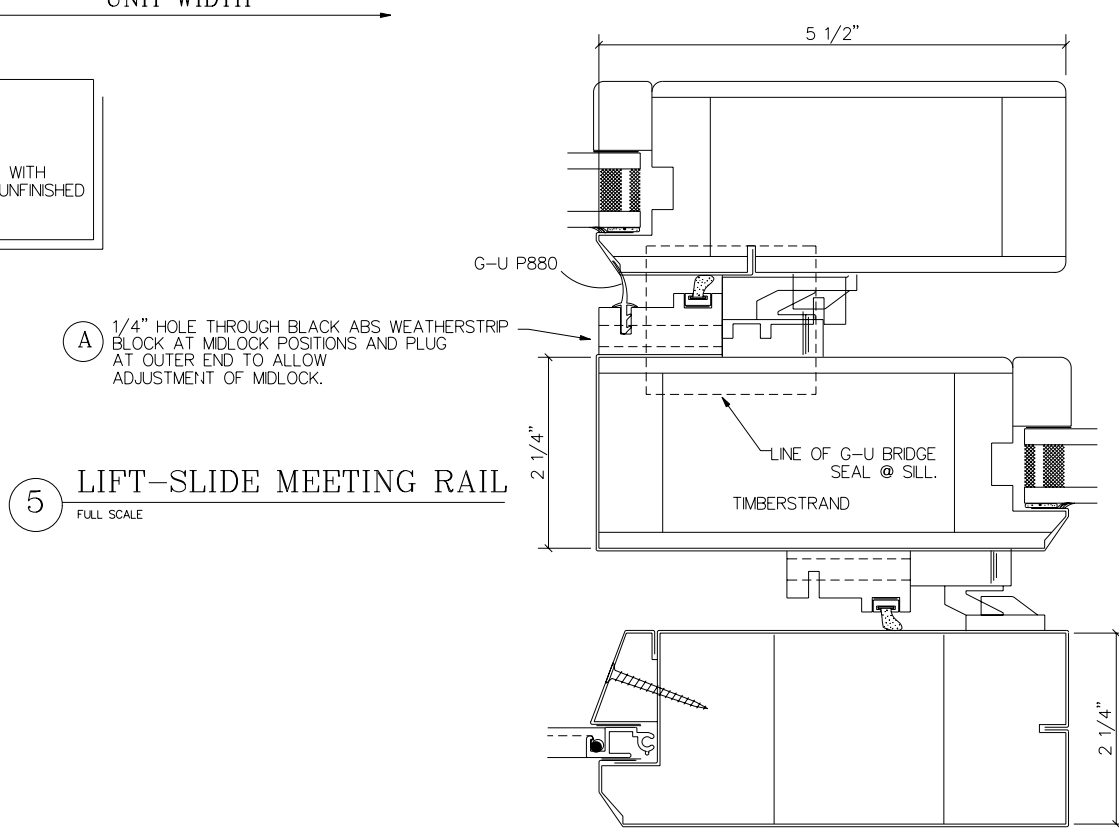


NOTE :  
SPECIES DESIGNATION  
ALL NONLABELED  
COMPONENTS WILL  
BE MADE OF SOFT MAPLE



NOTE :  
FINISH REQUIREMENTS  
COPPER CLAD EXTERIOR WITH PATINA #3. INTERIOR IS UNFINISHED



POINT FIVE  
WINDOWS

REVISIONS:	
7/17/01	WOW
9/19/01	WOW

POINT FIVE WINDOWS, INC. 1001 Buckingham • Fort Collins, Colorado 80524 • (970) 462-6871	
LIFT/SLIDE DOOR DETAILS	
SCALE: FULL	APPROVED BY: EP
DATE: 6-27-01	DRAWN BY: EP

DRAWING NUMBER:  
00184-D1